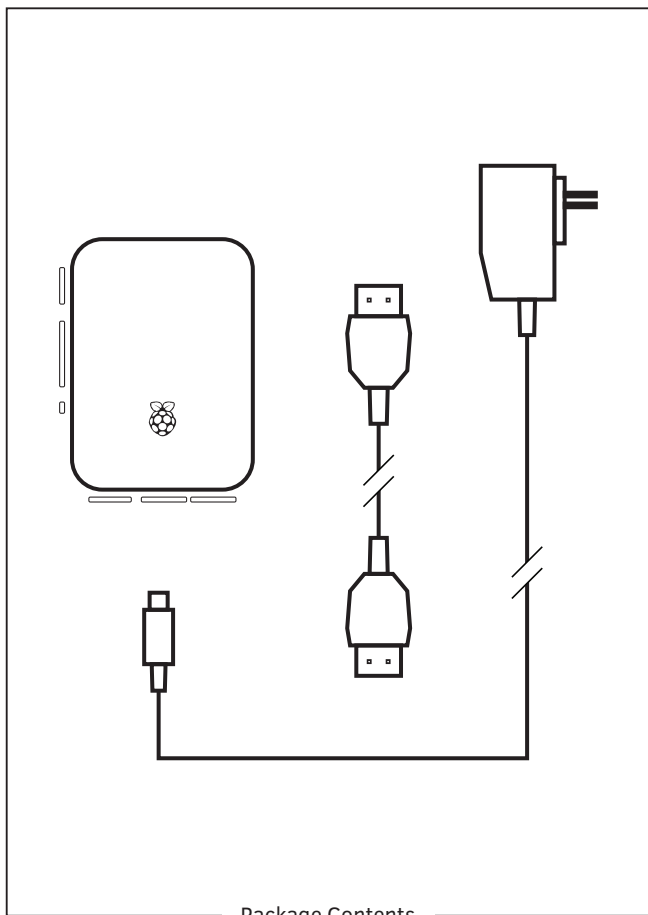


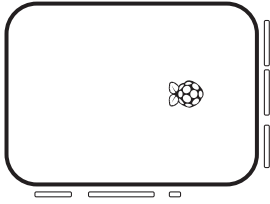


yodeck



Package Contents

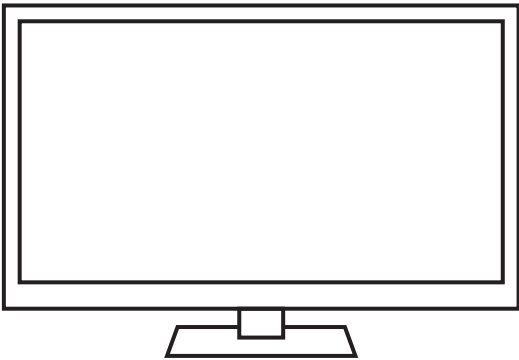
Quick Setup



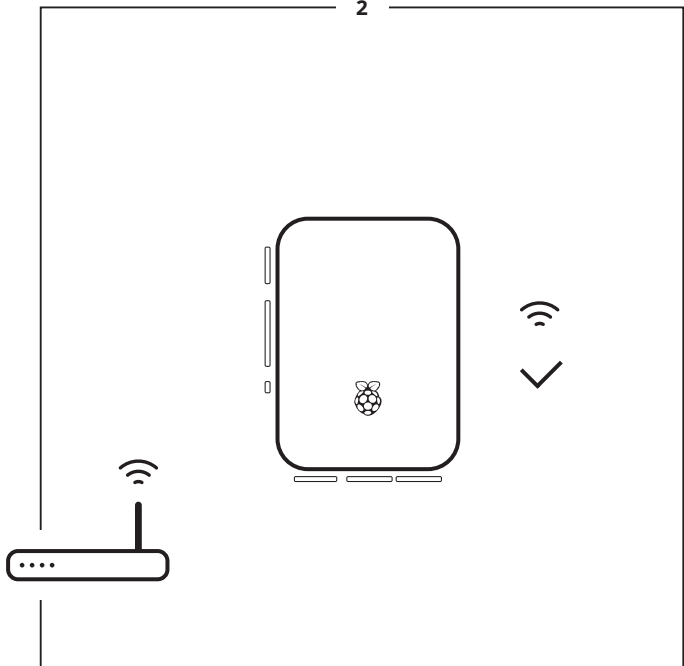
HDMI



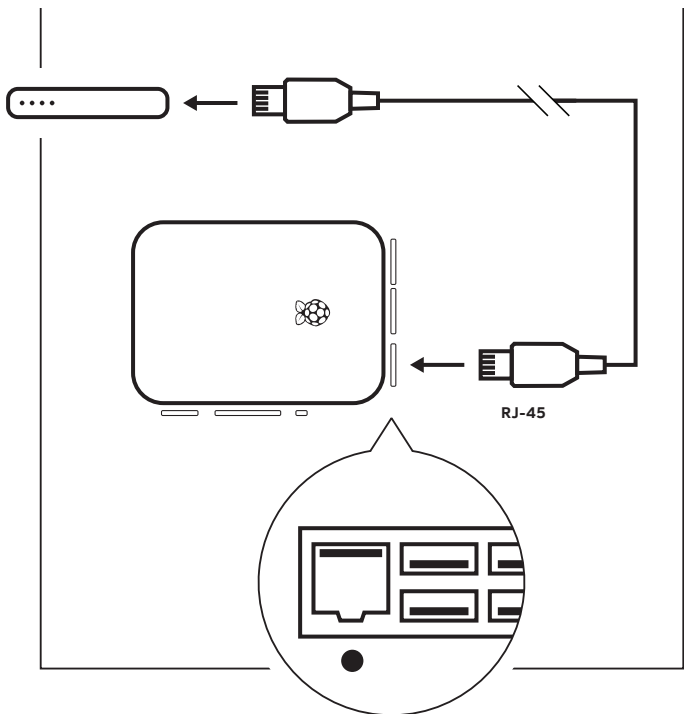
HDMI

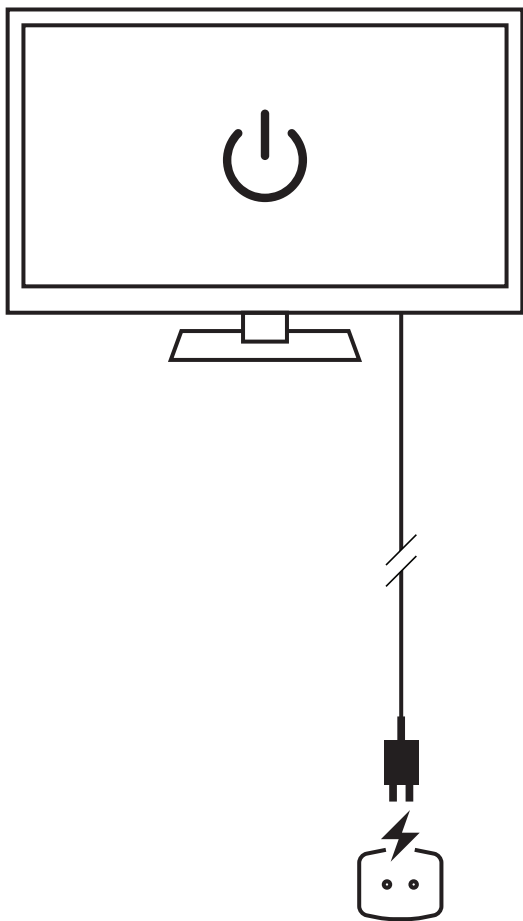


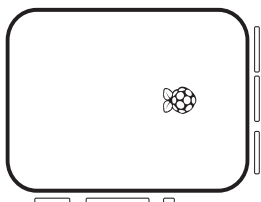
2



or

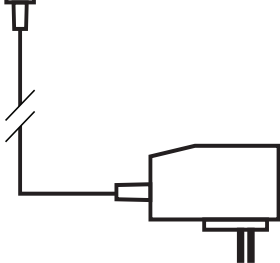






↑
to Power in

Micro USB



Having trouble?

Screen not showing anything? Make sure your TV is on and the TV's "Source" is set to the input that you connected your Playbox to (like an HDMI or Composite port).

Yodeck Logo is shown for too long? Wait at least 10' during startup before worrying.

Still seeing Player as "Offline"? Try using a LAN cable instead of WiFi. Or unplug the LAN cable (or WiFi adapter), wait 10" and plug it in.

Still not working? Avoid rebooting constantly, it might do more damage than good, just let us know and we will help you out.

More information at
yodeck.com/setup